



PALOMA CREEK



WASTE CONNECTIONS
Connect with the Future®

Paloma Creek Trash Collection Information

<https://www.wasteconnections.com/communities/paloma-creek/>

On our website (the above link) you will find our guidelines for all services. Below is a snip it of the main page.



Paloma Creek Community

Paloma Creek Trash Collection

Paloma West Trash/Recycle Day- MONDAY

Paloma North and East Trash/Recycling Day- TUESDAY

Trash Collection Guidelines



Follow these guidelines to ensure proper trash collection

[Collection Guidelines](#) →

Recycling Guidelines



Recycle responsibly by adhering to these simple guidelines

[Recycle Guidelines](#) →

Bulk Waste

BULK, EXTRA TRASH, LIMBS, AND BRUSH. Placed outside of the trash container is **collected 2nd and 4th weeks each month on your normal trash day.**

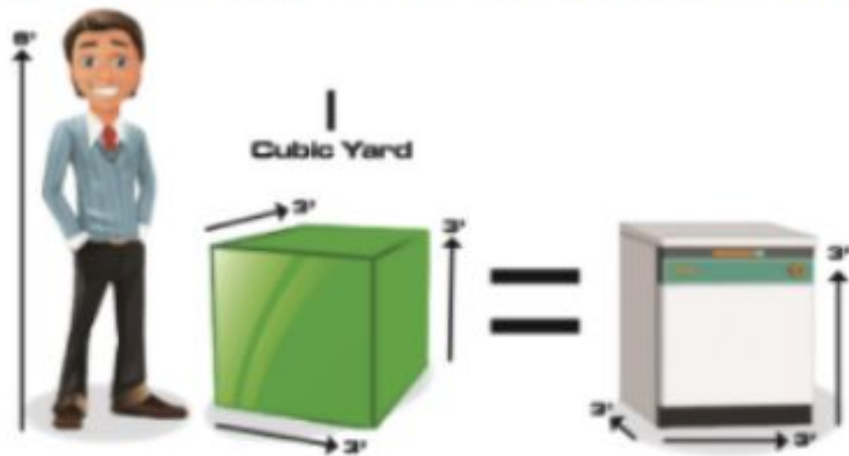
You may place out the following without scheduling:

- Four (4) yards of bulk, extra trash, limbs, and brush.
- Bulk items include furniture, mattresses, appliances, carpet, hot-water heaters, and fence panels. Fence panels must be cut into 4'x4' sections.
- Limbs/brush must be tied and bundled in piles measuring no larger than 3'x3'x3' and must be under 50 pounds.
- Christmas tree collection shall occur on the first collection day after the New Year.

Bulk waste includes waste not generated on a regular basis, including:

- Furniture (couch, table, mattress (must be bagged), box spring, desk, dresser, etc.)
- Please call for exercise equipment as this will damage our trucks.
- Refrigerators and AC Units MUST be tagged with a freon evacuation certificate issued by a licensed agent.
- Appliances (washer, dryer, dishwasher, etc.)
- Hot Water Heaters - Must be drained.
- Fencing/Decking/Siding (please remove nails, cut into lengths 4' or less, and tie and bundle under 50 pounds, limit six bundles per bulk day)
- Basketball goals (broken down into sections 4' or shorter, no concrete in base or poles)
- Carpeting/Flooring (please cut into lengths 4' or shorter and tie, bundle under 50 pounds, limit six bundles)
- NO CONTRACTOR-PRODUCED WASTE WILL BE COLLECTED. This includes construction, demolition, and renovation material.

Understanding What Four (4) Cubic Yards Looks Like



Bulk and Holiday Calendar

2025

BULK TRASH

HOLIDAY - ONE DAY DELAY

January						
S	M	T	W	T	F	S
			1	2	3	4
5	6	7	8	9	10	11
12	13	14	15	16	17	18
19	20	21	22	23	24	25
26	27	28	29	30	31	

February						
S	M	T	W	T	F	S
						1
2	3	4	5	6	7	8
9	10	11	12	13	14	15
16	17	18	19	20	21	22
23	24	25	26	27	28	

March						
S	M	T	W	T	F	S
						1
2	3	4	5	6	7	8
9	10	11	12	13	14	15
16	17	18	19	20	21	22
23	24	25	26	27	28	29
30	31					

April						
S	M	T	W	T	F	S
		1	2	3	4	5
6	7	8	9	10	11	12
13	14	15	16	17	18	19
20	21	22	23	24	25	26
27	28	29	30			

May						
S	M	T	W	T	F	S
				1	2	3
4	5	6	7	8	9	10
11	12	13	14	15	16	17
18	19	20	21	22	23	24
25	26	27	28	29	30	31

June						
S	M	T	W	T	F	S
1	2	3	4	5	6	7
8	9	10	11	12	13	14
15	16	17	18	19	20	21
22	23	24	25	26	27	28
29	30					

July						
S	M	T	W	T	F	S
				1	2	3
				4	5	
6	7	8	9	10	11	12
13	14	15	16	17	18	19
20	21	22	23	24	25	26
27	28	29	30	31		

August						
S	M	T	W	T	F	S
						1
2	3	4	5	6	7	8
9	10	11	12	13	14	15
16	17	18	19	20	21	22
23	24	25	26	27	28	29
30	31					

September						
S	M	T	W	T	F	S
	1	2	3	4	5	6
7	8	9	10	11	12	13
14	15	16	17	18	19	20
21	22	23	24	25	26	27
28	29	30				

October						
S	M	T	W	T	F	S
			1	2	3	4
5	6	7	8	9	10	11
12	13	14	15	16	17	18
19	20	21	22	23	24	25
26	27	28	29	30	31	

November						
S	M	T	W	T	F	S
						1
2	3	4	5	6	7	8
9	10	11	12	13	14	15
16	17	18	19	20	21	22
23	24	25	26	27	28	29
30						

December						
S	M	T	W	T	F	S
	1	2	3	4	5	6
7	8	9	10	11	12	13
14	15	16	17	18	19	20
21	22	23	24	25	26	27
28	29	30	31			

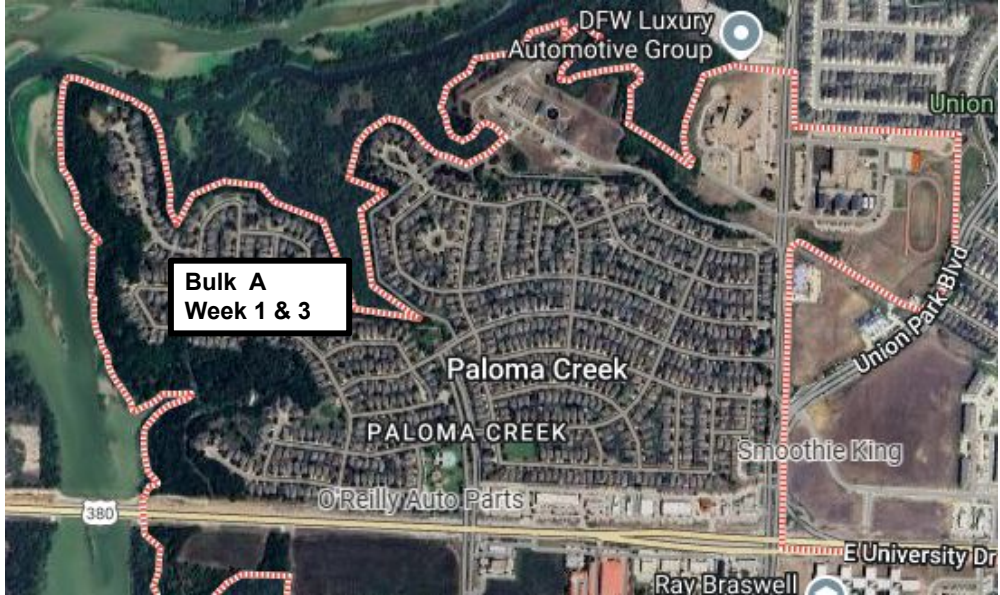
Proposed New Bulk Service



**Monday Bulk A
Week 1 & 3**

**Monday Bulk B
Week 2 & 4**

Paloma Tuesday North



Paloma Tuesday East

